

# 400 Florida Ave. PUD Application

## Washington DC

Square 3588 - Lots 4, 25, 803 - 400 Florida Avenue SE



**PROPERTY OWNER**  
Rangers Properties

**DEVELOPMENT TEAM**

**DEVELOPER / APPLICANT**  
Rangers Properties

**LAND USE COUNSEL**  
Holland & Knight

**ARCHITECT**  
SK&I Architectural Design Group, LLC

**CIVIL ENGINEER**  
Bohler Engineering

**TRAFFIC CONSULTANT**  
Grove/Slade Associates, Inc.

**LANDSCAPE ARCHITECT**  
Parker Rodriguez, Inc.

**ZONING COMMISSION NO.**  
16-10





Sheet	Name	DCMR 2406	Sheet	Name	DCMR 2406
<b>Introduction</b>			<b>Architectural Design (continued)</b>		
A-000	Sheet index	2406.11.e.1,2,3	A-216	Sight line study	2406.12.e
A-001	PUD Check list		A-217	Sight line study	2406.12.e
A-002	Location map	2406.11.g.7, 2406.12.g	A-221	South elevation	2406.12.e
A-003	Nearby Precedents	2406.11.g.7, 2406.12.g	A-222	East and west elevations	2406.12.e
A-004	Existing aerial views	2406.11.b	A-222-A	Alternative East elevations	2406.12.e
A-005	Zoning map	2406.11.b	A-223	North elevation	2406.12.e
A-006	Comprehensive plan	2406.11.e.3	A-224	Hotel Loggia	2406.12.e
A-007	Development Data	2406.11.e.1,2,3	A-301	Building Sections	2406.12.e
A-008	Unit Mix	2406.11.e.1,2,3	A-302	Building Sections	2406.12.e
			A-303	Hotel Sections	2406.12.e
A-010	Florida market conceptual plan		A-304	Enlarged penthouse section	2406.12.e
A-020	Residential LEED score card	2406.11.b, 2406.11.e.5	A-305	Enlarged penthouse section	2406.12.e
A-021	Hotel LEED score card	2406.11.b, 2406.11.e.5	A-306	Enlarged penthouse section	2406.12.e
<b>Architectural Design</b>			A-401	Exterior materials Hotel	2406.12.e
A-100	Site plan	2406.12.e	A-402	Loggia materilas Hotel	2406.12.e
A-101	Cellar floor plan	2406.12.e	A-403	Exterior materials residential	2406.12.e
A-102	First floor plan	2406.12.e	A-404	Brick details	2406.12.e
A-103	Second floor plan	2406.12.e	A-405	Hotel Architecture Precedents	2406.12.e
A-104	Third floor plan	2406.12.e	A-406	Hotel Architecture Precedents	2406.12.e
A-105	4th Floor plan	2406.12.e	A-407	Hotel Architecture Precedents	2406.12.e
A-106	5th Floor plan	2406.12.e	A-408	MOB Hotel Precedents	2406.12.e
A-107	6th Floor plan	2406.12.e	<b>Landscape Design</b>		
A-108	7th Floor plan	2406.12.e	L-001	Ground level landscape plan	2406.12.d
A-108A	8th Floor plan	2406.12.e	L-002	Roof level landscape plan	2406.12.d
A-109	9th Floor plan	2406.12.e	L-02B	Hotel roof level lighting precedence	2406.12.d
A-109A	10th & 11th Floor plan	2406.12.e	L-02C	Residential roof level conceptual lighting	2406.12.d
A-110	Roof plan	2406.12.e	L-02C	Roof level conceptual lighting plan	2406.12.d
A-111	Penthouse floor plan	2406.12.e	L-003	Street Sections	2406.12.d
A-112	Court diagram	2406.12.e	L-004	Ground level Precedent Photos	2406.12.d
A-113	Projections into public space	2406.12.e	L-005	Deaf Space Precedent Photos	2406.12.d
A-114	Bay projection Details	2406.12.e	L-006	Roof level Precedent Photos	2406.12.d
			<b>Civil Design</b>		
A-201	South West view	2406.12.e	C-1	Cover Sheet & General Notes	
A-202	South East view	2406.12.e	C-2	Existing Conditions/Demolition Plan	2406.11.e.5
A-203	Street view	2406.12.e	C-3	Site/Grading Plan	2406.12.(c&d)
A-204	Street view	2406.12.e	C-4	Off-site improvements plan	
A-206	Street view	2406.12.e	C-5	Utility Plan	2406.12.f, 2406.11.e.4
A-207	Street view	2406.12.e	C-6	Stom Water Management Plan / GAR plan	
A-208	Street view	2406.12.e	C-7	Erosion and Sediment Control Plan	2406.12.c
A-209	Court yard view	2406.12.e	C-8	SU-30 Truck Turn Plan- ENTRANCE	
A-210	Aerial SE	2406.12.e	C-9	SU-30 Truck Turn Plan- EXIT	
A-211	Aerial SW	2406.12.e	C-10	Circulation Plan	
A-212	Aerial NW	2406.12.e			
A-213	Aerial NE	2406.12.e			
A-214	Roof 3D view	2406.12.e			
A-215	Roof 3D view	2406.12.e			
	Supplimental sheets				





SQUARE: 3588

LOT: 4

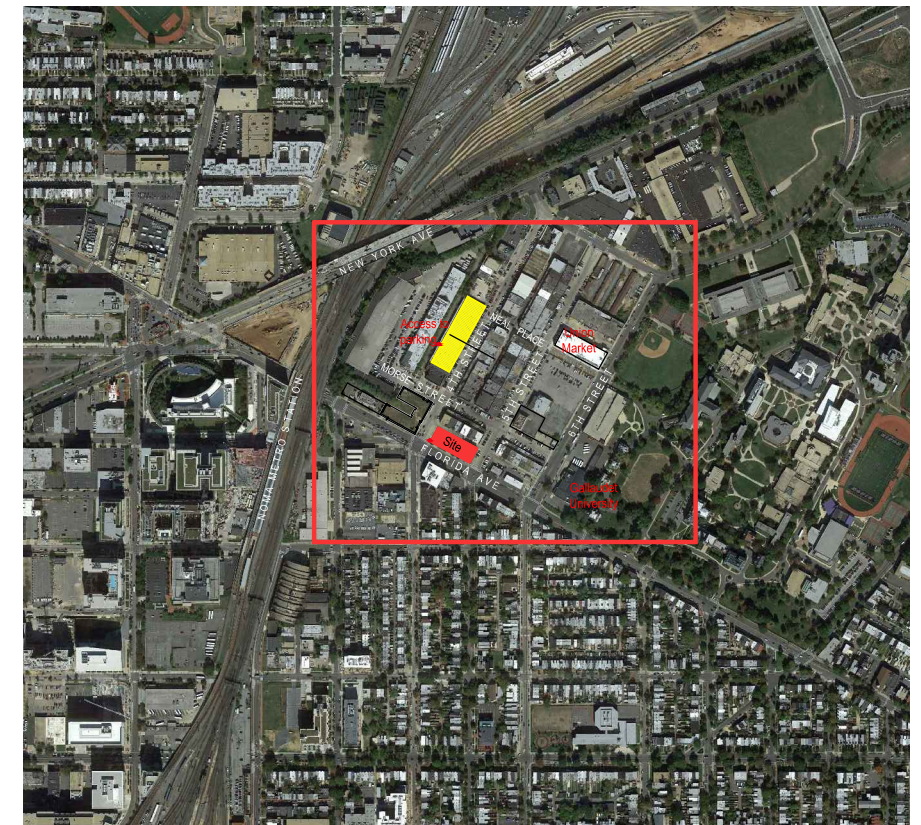
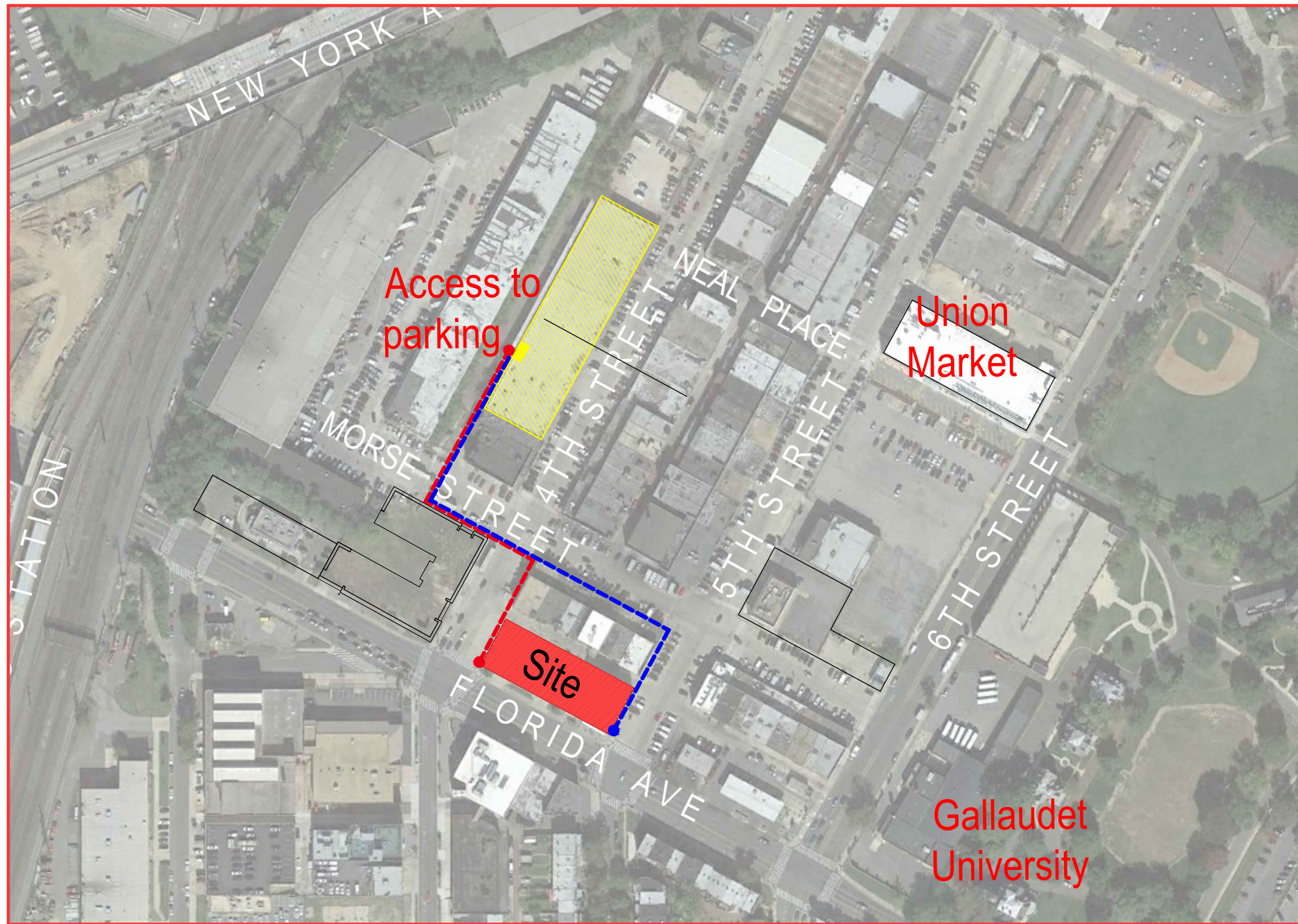
SECTION	ITEM	SHEET NUMBER
2406.11a	Complete application form (s)	In Written Application
2406.11b	Map showing location, existing zoning of subject site and adjacent properties and any change of zoning	A003
2406.11c	Statement of purposes and objectives, including the proposed form of development and description of how project meets the evaluation standards of §2403:	In Written Application
2406.11d	SITE PLAN: A general site, landscape, and development plan indicating the proposed use, location, dimensions, number of stories, and height of each building and exact area of the total site.	L001 / C3
2406.11e	DEVELOPMENT DATA: (1) The area and dimensions of each lot proposed for each building and the exact area of the total site; area of the total site; (2) The percentage of lot occupancy of each building on each lot and the total percentage of lot occupancy for all buildings on the entire site (3) The gross floor area and floor area ratio for each building on each lot, including a break-down for each use, and the total gross floor area and floor area ratio for all buildings on the entire site, including a break-down for each use, (4) A Circulation plan, including the location of all vehicular and pedestrian access ways and the location and number of all off-street parking spaces and loading berths, including an indication of which spaces are designated for which use, (5) The existing topography of the development area; the location of all major natural features including trees of six-inch caliper or greater; and the location and elevations of public or private streets, alley, or easement bounding or traversing the site, including an indication of which of the rights-of-way or easements are to be continued, relocated, or abandoned; (6) Estimated quantities of potable water required by the project, and of sanitary sewage and storm water to be generated including the methods of calculating those quantities, (7) Any other information needed to understand the unique character and problems of developing the PUD.	A006 A006 A006 A004 C2 C6 LEED A020

SECTION	ITEM	SHEET NUMBER
2406.12a	Completed application form	In Written Application
2406.12b	A detailed statement as to the uses to be located in the project, including the location, number, size, and types of stores, offices, residential, institutional, industrial, and other uses;	In Written Application
2406.12c	SITE PLAN : A detailed site plan, showing the location and external dimensions of all buildings and structures, utilities, and other easements walkways, driveways, plazas, arcades, and any other open spaces;	C3 / A100
2406.12d	LANDSCAPE & GRADING PLAN; A detailed landscaping and grading plan showing all existing contour lines, including graphic illustration of grades exceeding fifteen percent in five percent increments, landscaping to be retained, grades, planting, and landscaping. The plan shall also show the proposed drainage for the site, including the location of buildings, roads, sidewalks, water, and sewer lines. proposed erosion control measures shall also be shown;	L001-L004 / C3
2406.12e	FLOOR PLANS; Typical floor plans and architectural elevations for each building, sections for each building and the project as a whole, and sections and elevations of the entire square within which the project is located;	A100 - A402
2406.12f	CRICULATION PLAN; A final detailed circulation plan showing all driveways and walkways, including widths, grades, and curb cuts, as well as detailed parking and loading plans;	A102 / C8
2406.12g	OTHER INFORMATION; Any other information needed to understand the final design of the proposal, or information specifically requested by the commission;	LEED A020
2406.12h	A statement showing how the second-stage plans are in accordance with the intent and purposes of this title, the PUD process, and the first-stage approval.	N/A this is a consolidated PUD application

© 2016 SK+I Architectural Design Group, LLC.







Walking Path to Parking-Hotel: -----  
 Parking Walking distance: 650'  
 Parking Walking average time: 2.5 minutes

Walking Path to Parking-Residential: -----  
 Parking Walking distance: 920'  
 Parking Walking average time: 3.4 minutes

Parking Information:

SQ. 3587  
 Lot. 0828 , 0827 , 7012 , 7013



400 Florida Avenue | Washington DC

November 18, 2016 | A002



Location Map







1270 4th Street NE /  
-Edens  
-11 story / 520 du's  
-40,000 sf Retail  
Pending Development



1309 5th Street NE (EDENS)  
-Market / Theatre / 112K office



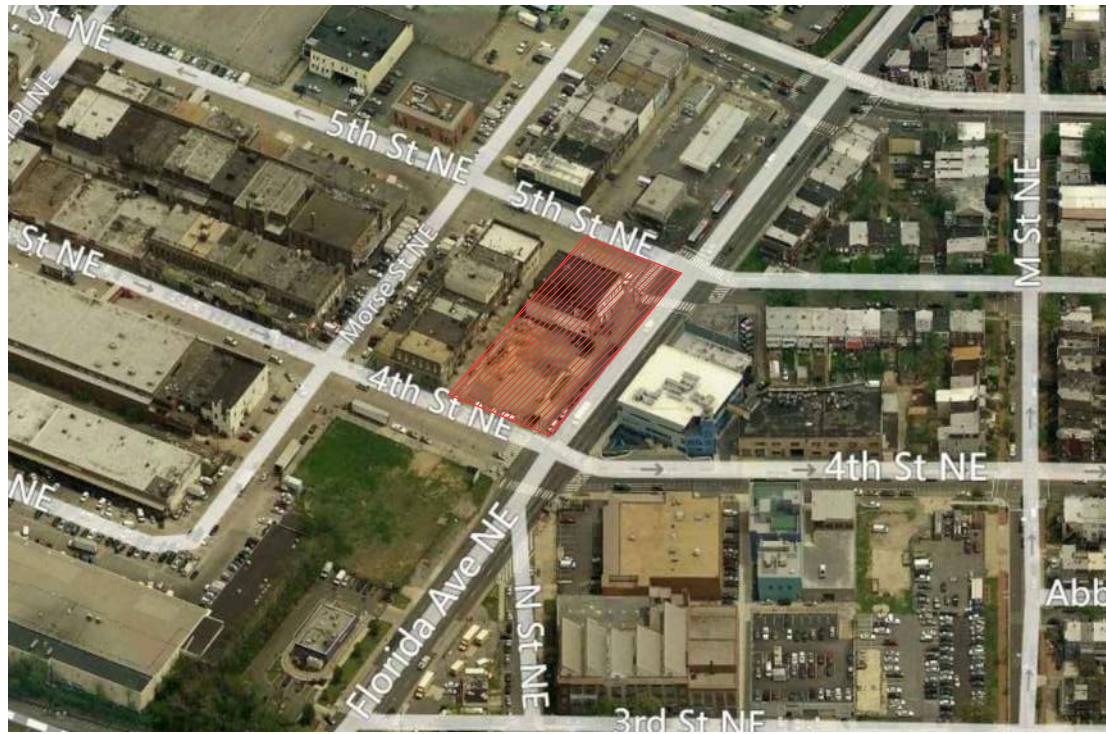
500 & 530 morse st. NE  
-9 story / 270 du's  
-20,000 Sf. Retail  
Pending Development



The Edison / LCOR  
-6 story / 171 du's  
-26,000 sf Retail  
340 Florida Ave NE  
Pending Development



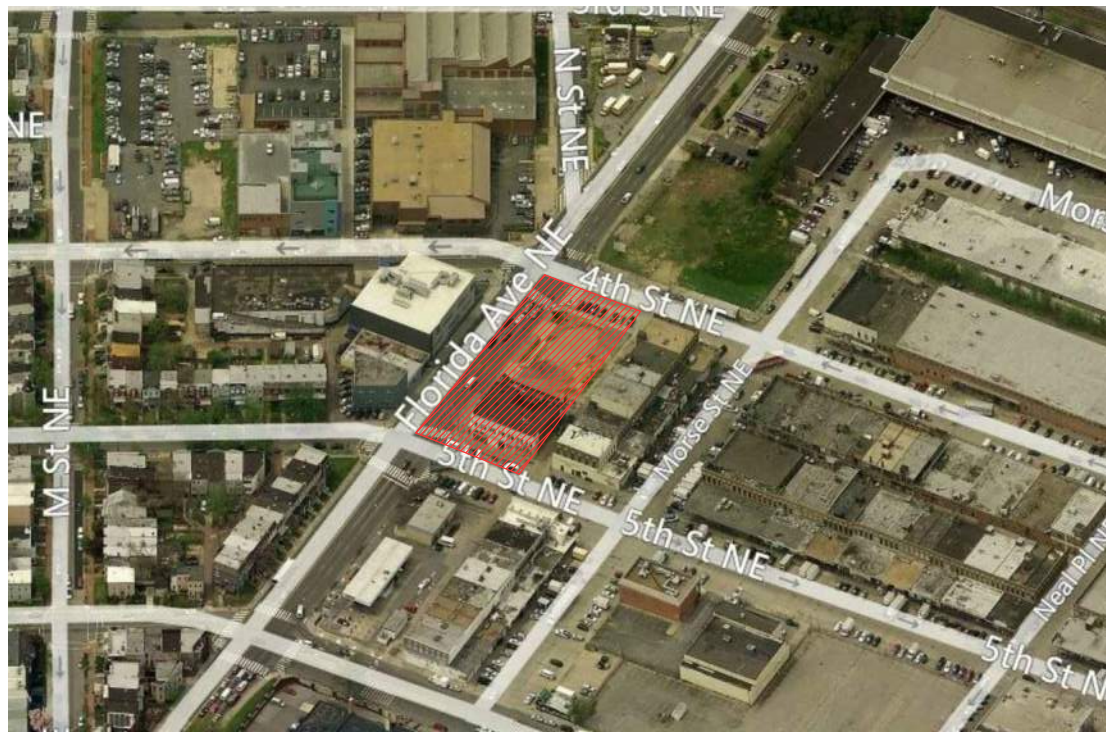




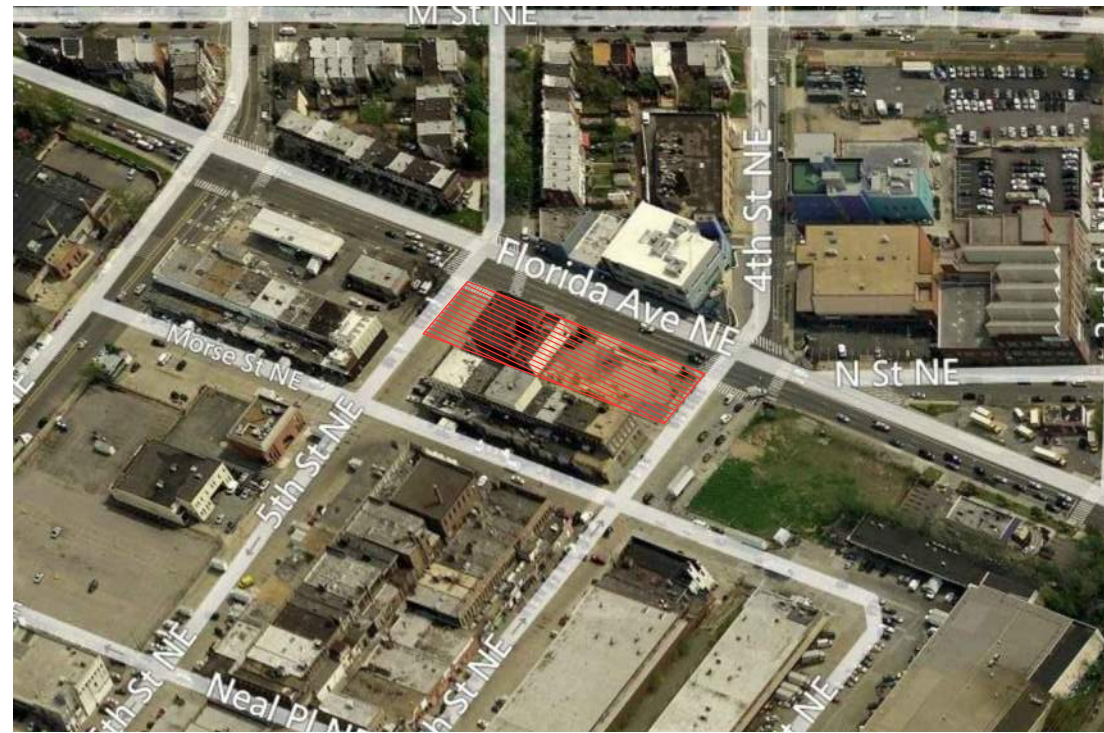
north west - bird eye view



south west - bird eye view



south east - bird eye view



north east - bird eye view



key plan



400 Florida Avenue | Washington DC

November 18, 2016 | A004



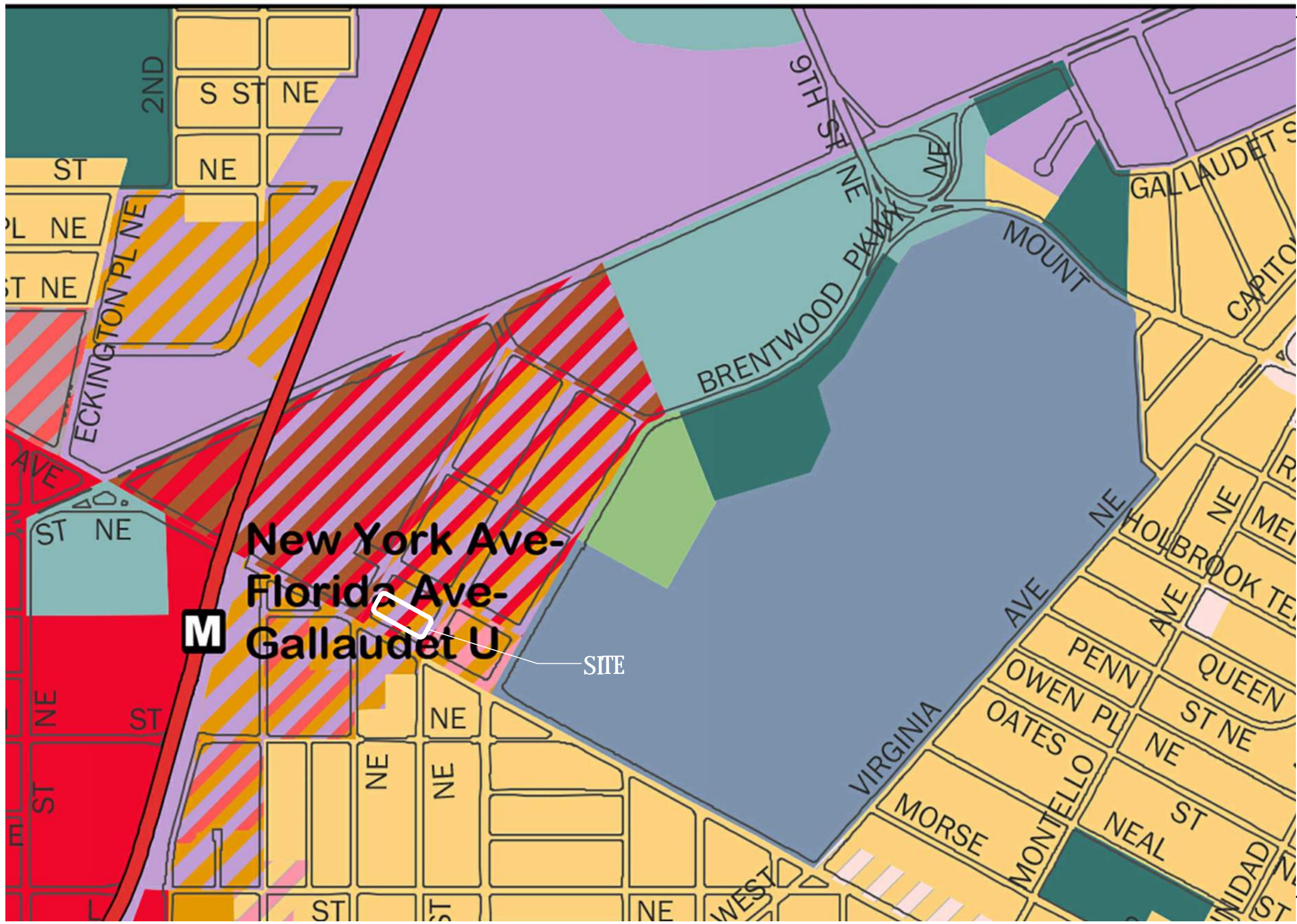
Existing Aerial Views



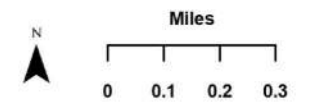
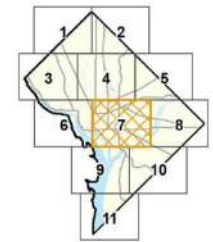




### Comprehensive Plan Future Land Use Map 7



- Low Density Residential
- Moderate Density Residential
- Medium Density Residential
- High Density Residential
- Low Density Commercial
- Moderate Density Commercial
- Medium Density Commercial
- High Density Commercial
- Production, Distribution, and Repair
- Federal
- Local Public Facilities
- Institutional
- Parks, Recreation, and Open Space
- Mixed Land Use
- Water



Government of the District of Columbia  
Office of Planning ~ January 2013

This map was created for planning purposes from a variety of sources. It is neither a survey nor a legal document. Information provided by other agencies should be verified with them where appropriate.



400 Florida Avenue | Washington DC

November 18, 2016 | A006



Comprehensive Plan



	C-3-C PUD Requirements - Hotel Use	C-3-C PUD Requirements - Residential Use	Proposed PUD - Hotel Use	Proposed PUD - Residential Use	Proposed PUD - Retail Use	Total Proposed - Hotel, Residential and Retail Use
FAR	8.0	8.0				8.0
Gross Floor Area (GFA) Allowed	164,288	164,288	66,924	94,632	2,732	164,288
Number of Dwelling Units			155	110		
Building Height	120' *	120' *	114'-7"	120'		
Lot Occupancy	100%	100%				74.20%
Rear Yard	2 1/2"/ft of adjacent height** not < 12'-0" = 25' (based off 120' height)	2 1/2"/ft of adjacent height** not < 12'-0" = 25' (based off 120' height)				45'-0"
Side Yard	not required ***	not required ***				
Closed Court	not applicable	not applicable				
Open Court	4"/ft of height not < 15'-0" **** = 40' (based off 120' height)	4"/ft of height not < 15'-0" **** = 40' (based off 120' height)	132'-6" , 141'-10"	132'-6" , 141'-10"		
Penthouse Height	20'-0"	20'-0"	10'-0" , 12'-0" , 18'-0" and 20'-0"	8'-11" , 9'-4" , 13'-0" , and 20'-0"		
Penthouse FAR	0.4	0.4				0.3
Penthouse Use: Mechanical Space (sf)			800	800		1,600
Penthouse Use: Communal Space (sf)			1,907	2,550		4,457
Penthouse Setback	1 to 1	1 to 1	1 to 1	1 to 1		
GAR %	0.200	0.200	0.200	0.200	included in hotel and residential	
Parking [parking/units]	1/4units = 39	1/4units = 28	0	3		3
Parking Hotel Function Use	none required below 10,000 sf		0			
Parking Retail use	none required below 3,000 sf					
Compact Parking Spaces Allowed	25%	25%				
<b>Total Car Parking</b>			0	3		3****
Bicycle Parking [parking/units]		1/3units = 37	6	96		102
Loading Berths	1 berth @ 30', 1 platform @ 100 sf, 1 service @ 20'	1 berth @ 55', 1 platform @ 200 sf, 1 service @ 20'	1 berth @ 12' x 30', 1 platform @ 100 sf	1 berth @ 12' x 30', 1 platform @ 200 sf		2 berths @ 12' x 30', 1 platform @ 100 sf, 1 platform @ 200 sf
Loading Berths Hotel Function Use	none required below 10,000 sf					
Loading Berths Retail Use	none required below 8,000 sf					
<b>Affordable Housing Unit Summary</b>						
Residential GFA				94,632		
GFA Set Aside		8% @ 80% AMI = 7,571		12% Total = 11,356 6% @ 50% AMI = 5,678 6% @ 80% AMI = 5,678		
Number of Units Set Aside				14		
<b>Notes</b>						
*Section 2405.1 of the Zoning Regulations permits a maximum building height of 130 feet for PUDs in the C-3-C District. However, given that the 5th Street right-of-way is 100 feet, the 1910 Height Act limits the Maximum building height to 120 feet. As shown on the site plan, the building's point of measurement is at elevation 77'-8", which is the level of the curb opposite the middle of the front of the building on 5th Street.						
**Adjacent height = vertical distance from the mean finished grade at the middle of the rear of the structure to the highest point of the main roof or parapet wall.						
***If provided, 3"/ft of height not < 8'-0"						
****Measured from lowest level of the court						
*****One parking space shared with loading service space, 50 Parking spaces will be located off-site.						
***** Total lot area SQF. 20,536						
Flexibility Requested						





	floor	2 bedroom market rate	3 bedroom market rate	2 bedroom IZ @50%	3 bedroom IZ @80%	3 bedroom IZ @50%	4 bedroom IZ @80%	TOTAL UNITS
average sf		546	815	546	546	815	815	
	11	5	6					11
	10	5	6					11
	9	5	6		1	1		13
	8	5	6			1		12
	7	5	5		1			11
	6	5	5		1	1		12
	5	4	5			1	1	11
	4	4	5		1		1	11
	3	3	4		1	1		9
	2	3	4	1		1		9
	1							
<b>Total</b>		44	52	1	5	6	2	
<b>Total</b>		96		14				110
remarks								
	amenity							

NOTES:

1. Refer to sheet A103 - A109A for IZ units distribution.





Area	MATTER OF RIGHT (MOR)		PUD / TDR	
	Height	FAR	Height *	FAR
Moderate - Medium	65'-00"	4.0	65'-00" - 90'-00"	4.0 - 6.0
Medium - High	70'-00"	5.0	70'-00" - 130'-0"	5.0 - 8.0
High	90'-00"	6.5	130'-00"	8.0

\* or less if restricted by the Height Act

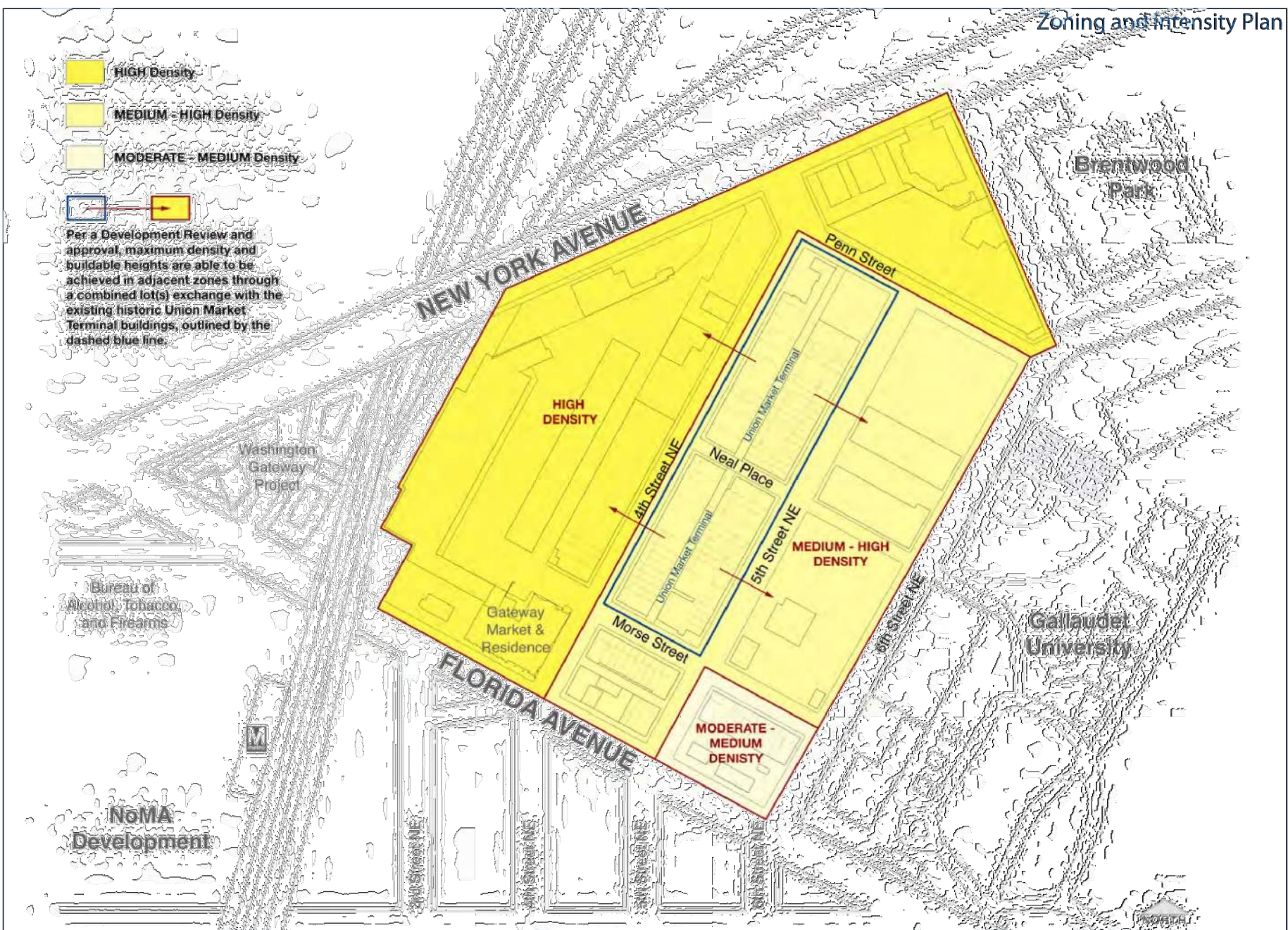


fig. 6.01

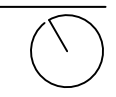


400 Florida Avenue | Washington DC

November 18, 2016 | A010



Florida Avenue Market Conceptual Plan







# LEED v4 for BD+C: New Construction and Major Renovation Project Checklist

Y ? N

			Credit	Integrative Process	1
<b>10</b>	<b>1</b>	<b>0</b>	<b>Location and Transportation</b>		<b>16</b>
			Credit	LEED for Neighborhood Development Location	16
1			Credit	Sensitive Land Protection	1
	1		Credit	High Priority Site	2
3			Credit	Surrounding Density and Diverse Uses	5
3			Credit	Access to Quality Transit	5
1			Credit	Bicycle Facilities	1
1			Credit	Reduced Parking Footprint	1
1			Credit	Green Vehicles	1
<b>8</b>	<b>0</b>	<b>1</b>	<b>Sustainable Sites</b>		<b>10</b>
Y			Prereq	Construction Activity Pollution Prevention	Required
			Credit	Site Assessment	1
2			Credit	Site Development - Protect or Restore Habitat	2
1			Credit	Open Space	1
3			Credit	Rainwater Management	3
2			Credit	Heat Island Reduction	2
		1	Credit	Light Pollution Reduction	1
<b>5</b>	<b>1</b>	<b>1</b>	<b>Water Efficiency</b>		<b>11</b>
Y			Prereq	Outdoor Water Use Reduction	Required
Y			Prereq	Indoor Water Use Reduction	Required
Y			Prereq	Building-Level Water Metering	Required
2			Credit	Outdoor Water Use Reduction	2
3			Credit	Indoor Water Use Reduction	6
		1	Credit	Cooling Tower Water Use	2
	1		Credit	Water Metering	1
<b>17</b>	<b>1</b>	<b>0</b>	<b>Energy and Atmosphere</b>		<b>33</b>
Y			Prereq	Fundamental Commissioning and Verification	Required
Y			Prereq	Minimum Energy Performance	Required
Y			Prereq	Building-Level Energy Metering	Required
Y			Prereq	Fundamental Refrigerant Management	Required
6			Credit	Enhanced Commissioning	6
6			Credit	Optimize Energy Performance	18
1			Credit	Advanced Energy Metering	1
1	1		Credit	Demand Response	2
1			Credit	Renewable Energy Production	3
1			Credit	Enhanced Refrigerant Management	1
1			Credit	Green Power and Carbon Offsets	2

<b>7</b>	<b>3</b>	<b>0</b>	<b>Materials and Resources</b>		<b>13</b>
Y			Prereq	Storage and Collection of Recyclables	Required
Y			Prereq	Construction and Demolition Waste Management Planning	Required
	3		Credit	Building Life-Cycle Impact Reduction	5
2			Credit	Building Product Disclosure and Optimization - Environmental Product Declarations	2
2			Credit	Building Product Disclosure and Optimization - Sourcing of Raw Materials	2
1			Credit	Building Product Disclosure and Optimization - Material Ingredients	2
2			Credit	Construction and Demolition Waste Management	2

<b>12</b>	<b>3</b>	<b>0</b>	<b>Indoor Environmental Quality</b>		<b>16</b>
Y			Prereq	Minimum Indoor Air Quality Performance	Required
Y			Prereq	Environmental Tobacco Smoke Control	Required
1			Credit	Enhanced Indoor Air Quality Strategies	2
3			Credit	Low-Emitting Materials	3
1			Credit	Construction Indoor Air Quality Management Plan	1
1	1		Credit	Indoor Air Quality Assessment	2
1			Credit	Thermal Comfort	1
1	1		Credit	Interior Lighting	2
2			Credit	Daylight	3
1	1		Credit	Quality Views	1
1			Credit	Acoustic Performance	1

<b>4</b>	<b>0</b>	<b>0</b>	<b>Innovation</b>		<b>6</b>
3			Credit	Innovation	5
1			Credit	LEED Accredited Professional	1

<b>1</b>	<b>1</b>	<b>0</b>	<b>Regional Priority</b>		<b>4</b>
1			Credit	Regional Priority: Specific Credit	1
	1		Credit	Regional Priority: Specific Credit	1
			Credit	Regional Priority: Specific Credit	1
			Credit	Regional Priority: Specific Credit	1

**64 10 2 TOTALS** Possible Points: **110**  
**Certified:** 40 to 49 points, **Silver:** 50 to 59 points, **Gold:** 60 to 79 points, **Platinum:** 80 to 110



400 Florida Avenue | Washington DC

November 18, 2016 | A020



Residential LEED Score Card





# LEED v4 for BD+C: New Construction and Major Renovation Project Checklist

Y ? N

		Credit	Integrative Process	1	
<b>10</b>	<b>1</b>	<b>0</b>	<b>Location and Transportation</b>	<b>16</b>	
			Credit	LEED for Neighborhood Development Location	16
1			Credit	Sensitive Land Protection	1
	1		Credit	High Priority Site	2
3			Credit	Surrounding Density and Diverse Uses	5
3			Credit	Access to Quality Transit	5
1			Credit	Bicycle Facilities	1
1			Credit	Reduced Parking Footprint	1
1			Credit	Green Vehicles	1
<b>7</b>	<b>0</b>	<b>1</b>	<b>Sustainable Sites</b>	<b>10</b>	
Y			Prereq	Construction Activity Pollution Prevention	Required
			Credit	Site Assessment	1
2			Credit	Site Development - Protect or Restore Habitat	2
1			Credit	Open Space	1
2			Credit	Rainwater Management	3
2			Credit	Heat Island Reduction	2
		1	Credit	Light Pollution Reduction	1
<b>5</b>	<b>0</b>	<b>1</b>	<b>Water Efficiency</b>	<b>11</b>	
Y			Prereq	Outdoor Water Use Reduction	Required
Y			Prereq	Indoor Water Use Reduction	Required
Y			Prereq	Building-Level Water Metering	Required
2			Credit	Outdoor Water Use Reduction	2
3			Credit	Indoor Water Use Reduction	6
		1	Credit	Cooling Tower Water Use	2
			Credit	Water Metering	1
<b>10</b>	<b>0</b>	<b>0</b>	<b>Energy and Atmosphere</b>	<b>33</b>	
Y			Prereq	Fundamental Commissioning and Verification	Required
Y			Prereq	Minimum Energy Performance	Required
Y			Prereq	Building-Level Energy Metering	Required
Y			Prereq	Fundamental Refrigerant Management	Required
3			Credit	Enhanced Commissioning	6
4			Credit	Optimize Energy Performance	18
			Credit	Advanced Energy Metering	1
1			Credit	Demand Response	2
			Credit	Renewable Energy Production	3
1			Credit	Enhanced Refrigerant Management	1
1			Credit	Green Power and Carbon Offsets	2

<b>9</b>	<b>0</b>	<b>0</b>	<b>Materials and Resources</b>	<b>13</b>	
Y			Prereq	Storage and Collection of Recyclables	Required
Y			Prereq	Construction and Demolition Waste Management Planning	Required
2			Credit	Building Life-Cycle Impact Reduction	5
2			Credit	Building Product Disclosure and Optimization - Environmental Product Declarations	2
2			Credit	Building Product Disclosure and Optimization - Sourcing of Raw Materials	2
1			Credit	Building Product Disclosure and Optimization - Material Ingredients	2
2			Credit	Construction and Demolition Waste Management	2
<b>11</b>	<b>2</b>	<b>0</b>	<b>Indoor Environmental Quality</b>	<b>16</b>	
Y			Prereq	Minimum Indoor Air Quality Performance	Required
Y			Prereq	Environmental Tobacco Smoke Control	Required
1			Credit	Enhanced Indoor Air Quality Strategies	2
2			Credit	Low-Emitting Materials	3
1			Credit	Construction Indoor Air Quality Management Plan	1
1			Credit	Indoor Air Quality Assessment	2
1			Credit	Thermal Comfort	1
1	1		Credit	Interior Lighting	2
2			Credit	Daylight	3
1	1		Credit	Quality Views	1
1			Credit	Acoustic Performance	1
<b>1</b>	<b>0</b>	<b>0</b>	<b>Innovation</b>	<b>6</b>	
			Credit	Innovation	5
1			Credit	LEED Accredited Professional	1
<b>1</b>	<b>1</b>	<b>0</b>	<b>Regional Priority</b>	<b>4</b>	
1			Credit	Regional Priority: Specific Credit	1
	1		Credit	Regional Priority: Specific Credit	1
			Credit	Regional Priority: Specific Credit	1
			Credit	Regional Priority: Specific Credit	1
<b>54</b>	<b>4</b>	<b>2</b>	<b>TOTALS</b>	<b>Possible Points: 110</b>	

**Certified:** 40 to 49 points, **Silver:** 50 to 59 points, **Gold:** 60 to 79 points, **Platinum:** 80 to 110



400 Florida Avenue | Washington DC

November 18, 2016 | A021



Hotel LEED Score Card